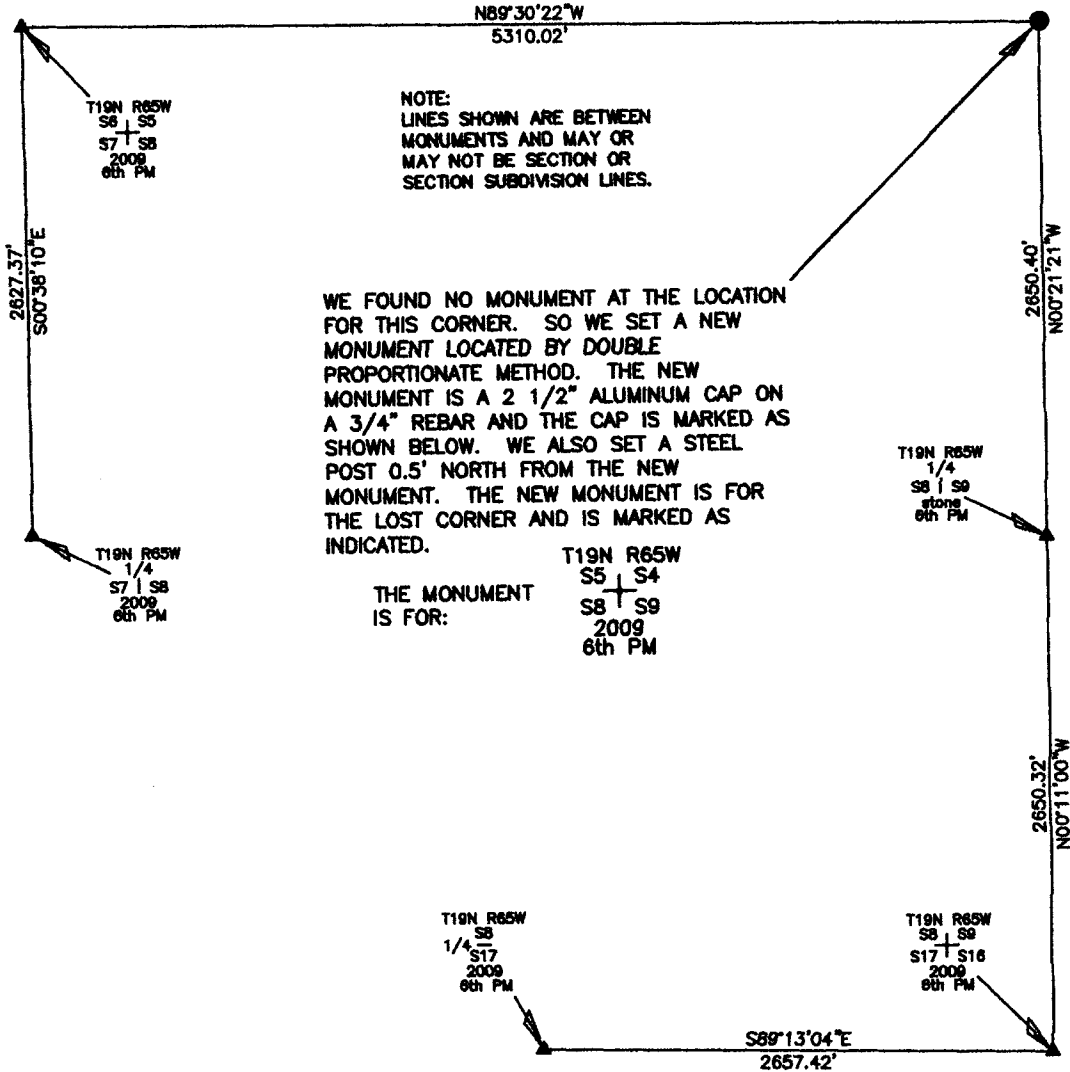


State of Wyoming Corner Record

(In compliance with the *CORNER PERPETUATION AND FILING ACT*, Wyoming Statutes, 1977, Section 36-11-101, et. seq., and the Rules and Regulations of the Board of Registration for Professional Engineers and Land Surveyors.)

Reverse side of this form may be used if more space is needed.

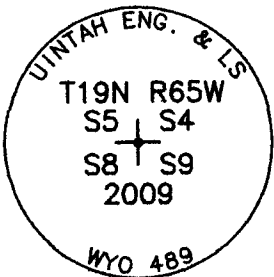
Record of original survey and citation of source of historic information (if corner is lost or obliterated). Description of corner monumentation evidence found and/or monument and accessories established to perpetuate the location of this corner. Sketch of relative location of monument, accessories, and reference points with course and distance to adjacent corner(s) (if determined in this survey). Method and rationale for reestablishment of lost or obliterated corner.



NOTE:
LINES SHOWN ARE BETWEEN
MONUMENTS AND MAY OR
MAY NOT BE SECTION OR
SECTION SUBDIVISION LINES.

WE FOUND NO MONUMENT AT THE LOCATION FOR THIS CORNER. SO WE SET A NEW MONUMENT LOCATED BY DOUBLE PROPORTIONATE METHOD. THE NEW MONUMENT IS A 2 1/2" ALUMINUM CAP ON A 3/4" REBAR AND THE CAP IS MARKED AS SHOWN BELOW. WE ALSO SET A STEEL POST 0.5' NORTH FROM THE NEW MONUMENT. THE NEW MONUMENT IS FOR THE LOST CORNER AND IS MARKED AS INDICATED.

THE MONUMENT IS FOR:
T19N R65W
S5 + S4
S8 + S9
2009
6th PM



THE MONUMENT IS MARKED

CORNER MONUMENT SYMBOLS

- RECORD IS FOR THIS CORNER MONUMENT.
- ▲ A RELATED CORNER OR WC MONUMENT.

SCALE 1"=1000'
(EXCEPT IN TRIVIAL CASES)
BEARINGS ARE RELATED TO WGS 84 WITH GPS OBSERVATIONS
DRAWN BY: N.J.M.
P.C. J. FLOYD
COUNTY: LARAMIE

Date of Field Work: 04/19/2009 Office Reference: _____

CROSS INDEX DIAGRAM

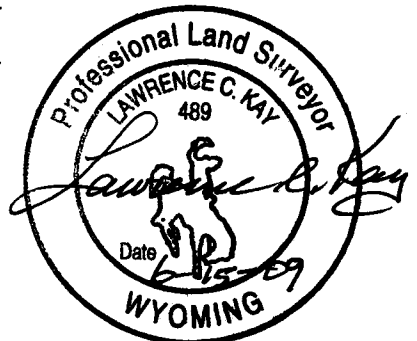
1	2	3	4	5	6	7	8	9	10	11	12	13	14	15	16	17	18	19	20	21	22	23	24	25	
A																									A
B																									B
C	6		5		4		3		2																C
D																									D
E																									E
F																									F
G	7		8		9		10		11		12														G
H																									H
J																									J
K																									K
L	18		17		16		15		14		13														L
M																									M
N																									N
O																									O
P	19		20		21		22		23		24														P
Q																									Q
R																									R
S																									S
T	30		29		28		27		26		25														T
U																									U
V																									V
W																									W
X	31		32		33		34		35		36														X
Y																									Y
Z																									Z
	1	2	3	4	5	6	7	8	9	10	11	12	13	14	15	16	17	18	19	20	21	22	23	24	25

Firm/Agency, Address

UELS, LLC
85 South 200 East
Vernal, Utah 84078
435-789-1017

This corner record was prepared by me or under my direction and supervision.

SEAL & SIGNATURE



RECORDED 6/22/2009 AT 12:06 PM REC# 525080 JK# 2118 PG# 878
DEBRA K. LATHROP, CLERK OF LARAMIE COUNTY, WY PAGE 1 OF 1

CORNER COMMON TO 4 SECTIONS
Corner Name: NORTHEAST CORNER OF SECTION 8 Section: 8 T 19N R 65W ; 6TH P.M. Cross Index No.: E-9
SBRPEPLS/PLSW: March 1994 (CLCR...SJA)